

**MET Recycling Pty Ltd**  
**Pollution Incident Response Management Plan Summary**  
**Updated June 2023**

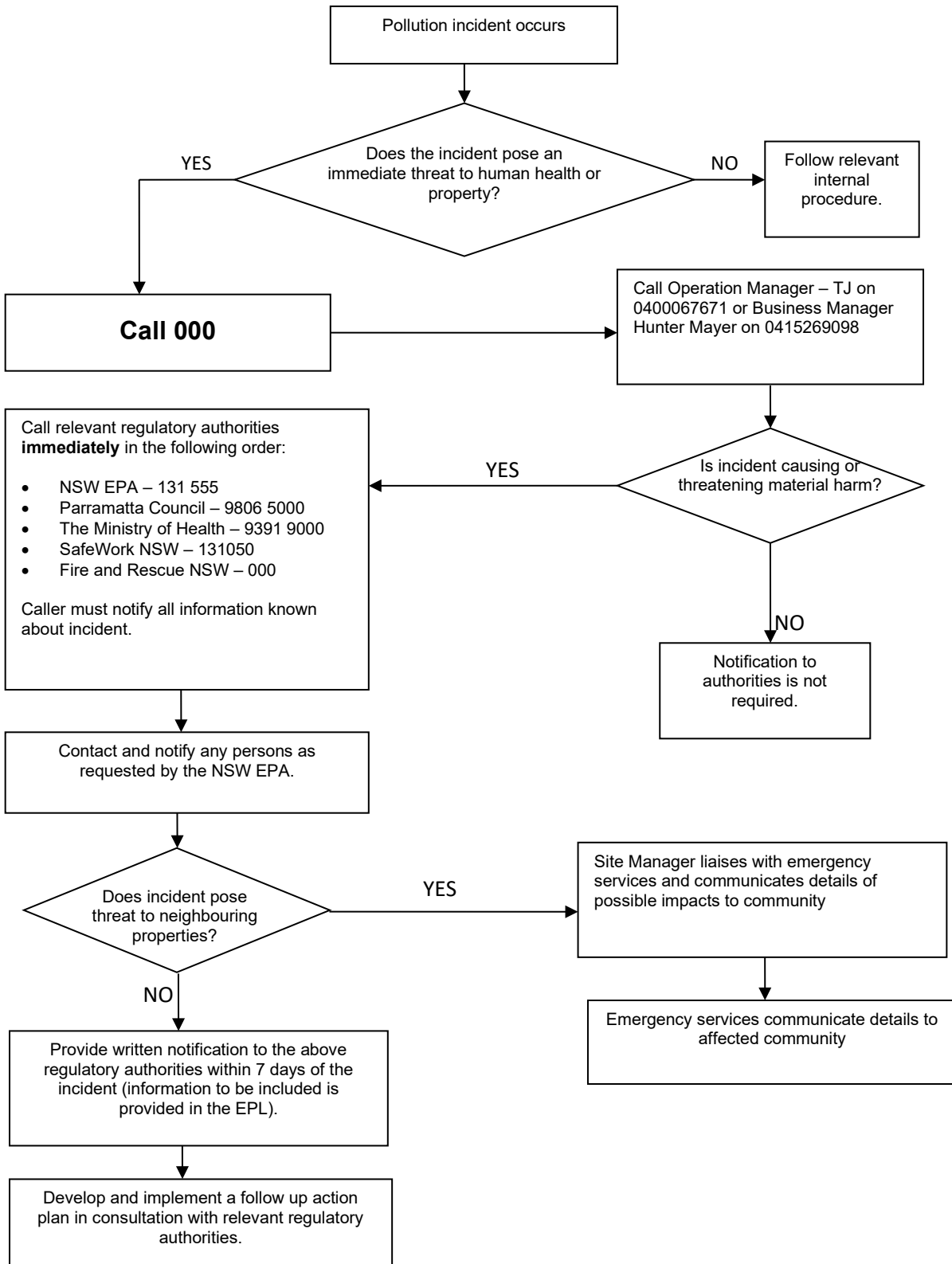
A comprehensive Pollution Incident Response Management Plan (PIRMP) was prepared by MET Recycling Pty Ltd (MET) and is available to the Environment Protection Authority (EPA), if requested. The purpose of the PIRMP is to:

1. Ensure comprehensive and timely communication about a pollution incident to staff at the premises, the EPA, other relevant authorities specified in the Act (such as local councils, NSW Ministry of Health, SafeWork NSW, and Fire and Rescue NSW) and people outside the facility who may be affected by the impacts of the pollution incident,
2. Minimise and control the risk of a pollution incident at the facility by requiring identification of risks and the development of planned actions to minimise and manage those risks,
3. Ensure that the PIRMP is properly implemented by trained staff, identifying persons responsible for implementing it, and ensuring that the PIRMP is regularly tested (at least one every 12 months period) for accuracy, currency, and suitability.

The PIRMP will be activated and implemented only if material harm to human health or the environment occurs, is occurring or is likely to occur as a result of an incident.

This summary information is placed on the MET Recycling website to ensure compliance with current NSW EPA requirements.

In the case of a “Pollution Incident” as defined in the “Environmental Guidelines: Preparation of pollution incident response management plans”, the following notification procedure must be used:



It is of utmost importance to include in this summary most of the contact details of relevant Government and non-Government Organisations to ensure that these contact details are easily accessible by everyone involved in managing the incident.

It also equally important to include contact details of relevant MET people responsible for the management of incidents.

**Table 1** includes the emergency contact list of all relevant stakeholders including State and local Government Organisations.

**Table 1: Emergency Contact list – External stakeholders**

<b>Organisation</b>	<b>Contact Phone Number</b>
<b>Ambulance</b>	000
<b>Fire Brigade</b>	000
<b>Police</b>	000
<b>NSW EPA</b>	13 15 55
<b>Auburn Police Station</b>	9646 8699
<b>Silverwater Fire Station</b>	9647 1246
<b>Auburn Hospital</b>	8759 3000
<b>EPA Environment Line</b>	13 15 55
<b>Dangerous Goods Licensing Hotline</b>	13 15 55
<b>SafeWork – Sydney</b>	13 10 50
<b>DPI (NSW Fisheries)</b>	1300 550 474
<b>WIRES</b>	1300 094 737
<b>Parramatta Council</b>	9806 5000
<b>Ministry of Health – Sydney</b>	9391 9000
<b>Sydney Catchment Authority</b>	1800 061 069
<b>Telstra</b>	1800 307 516
<b>Energy Australia</b>	13 34 66
<b>Gas (AGL)</b>	13 12 45
<b>Dial before you dig</b>	1100

**Table 2** includes contact details of relevant MET people responsible for the management of incidents.

**Table 2: Emergency Contact List – Internal MET Management**

<b>Position</b>	<b>Name</b>	<b>Responsibilities</b>	<b>Contact Details</b>
<b>Operations Manager</b>	Thomas Johnson	<ul style="list-style-type: none"> <li>• Management of Workplace Activities and Staff</li> <li>• Operate plants within Environmental Approvals</li> </ul>	Mobile: 0400067671 Email: <a href="mailto:tj@metrecycling.com.au">tj@metrecycling.com.au</a>
<b>Business Manager</b>	Hunter Mayer	<ul style="list-style-type: none"> <li>• Overall management of MET daily business</li> <li>• WHS aspects</li> <li>• Staff training</li> <li>• Incident actions and reporting</li> </ul>	Mobile: 0415269098 Email: <a href="mailto:hunter@metrecycling.com.au">hunter@metrecycling.com.au</a>
<b>Managing Director</b>	Jason O'Sullivan	<ul style="list-style-type: none"> <li>• Overall management of all activities</li> <li>• Operate plant within environmental approval limits</li> <li>• First point of contact in case of pollution incident</li> </ul>	Mobile: 0412148227 Email: <a href="mailto:jason@metrecycling.com.au">jason@metrecycling.com.au</a>